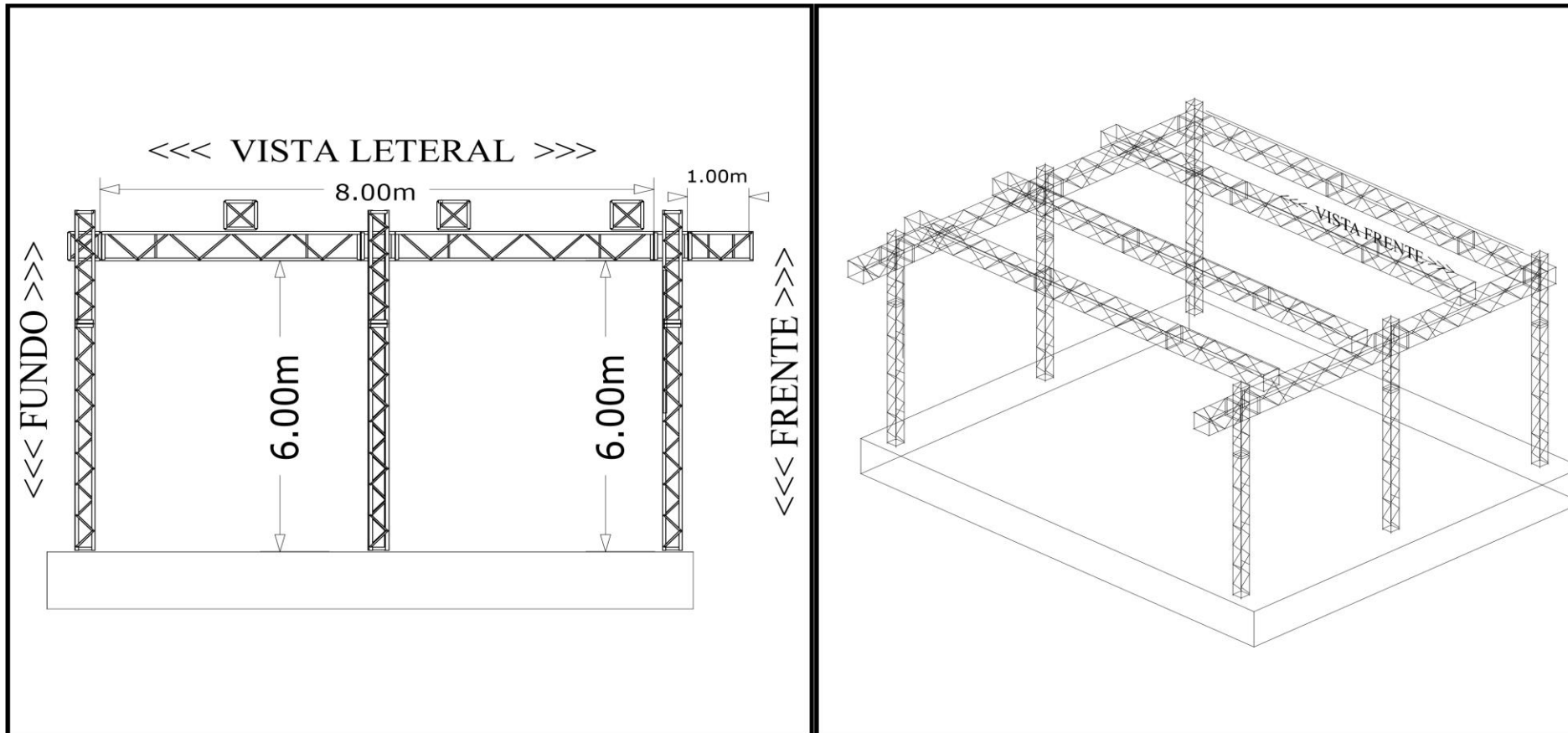


### VISTA TETO E FRENTE GRIDE

SAO 3 LINHAS POR CIMA DO GRIDE  
OBS. GRIDE TODO Q50

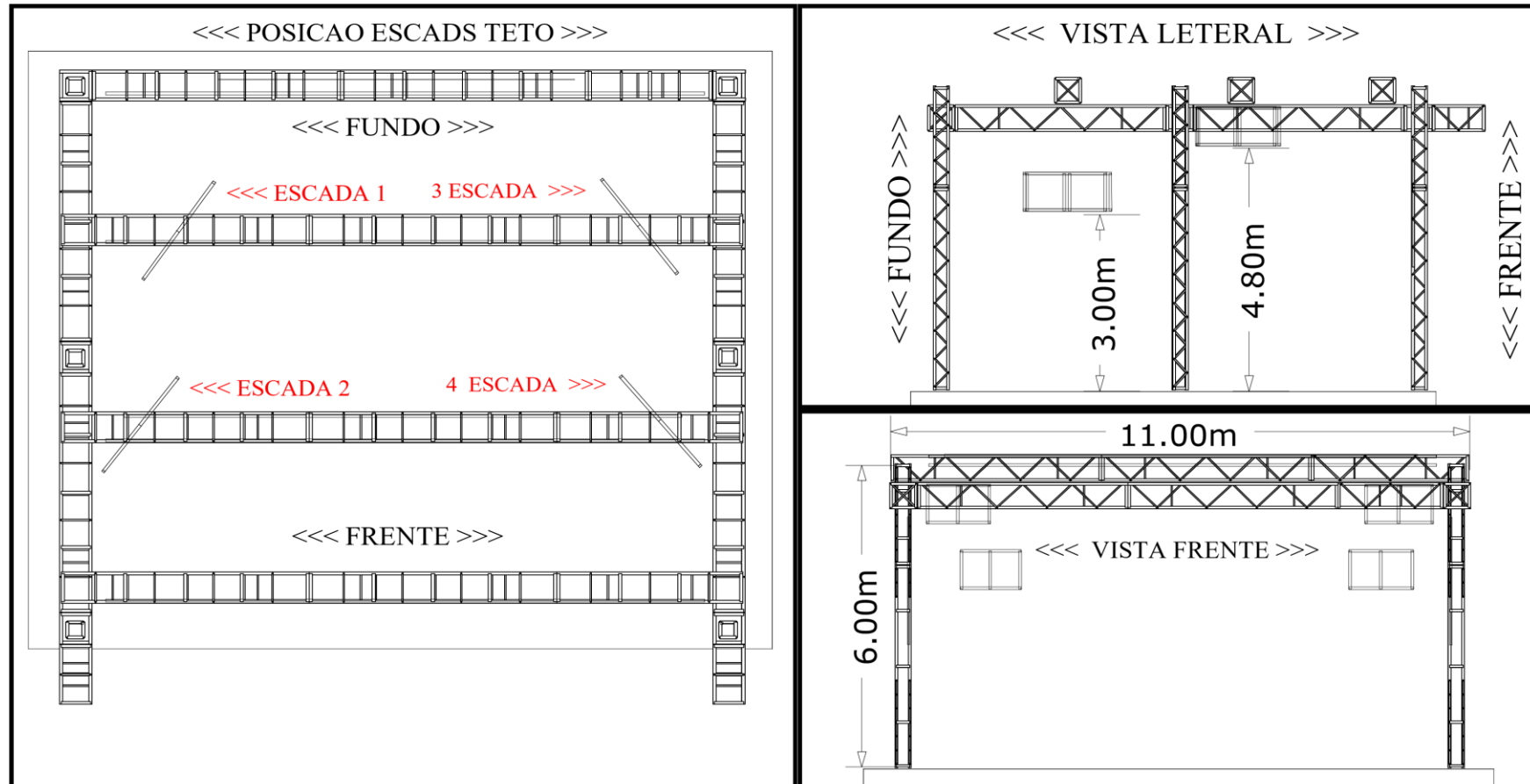




## VISTA LATERAL E ISOMETRIC GRIDE

SAO 3 LINHAS POR CIMA DO GRIDE  
OBS. GRIDE TODO Q50



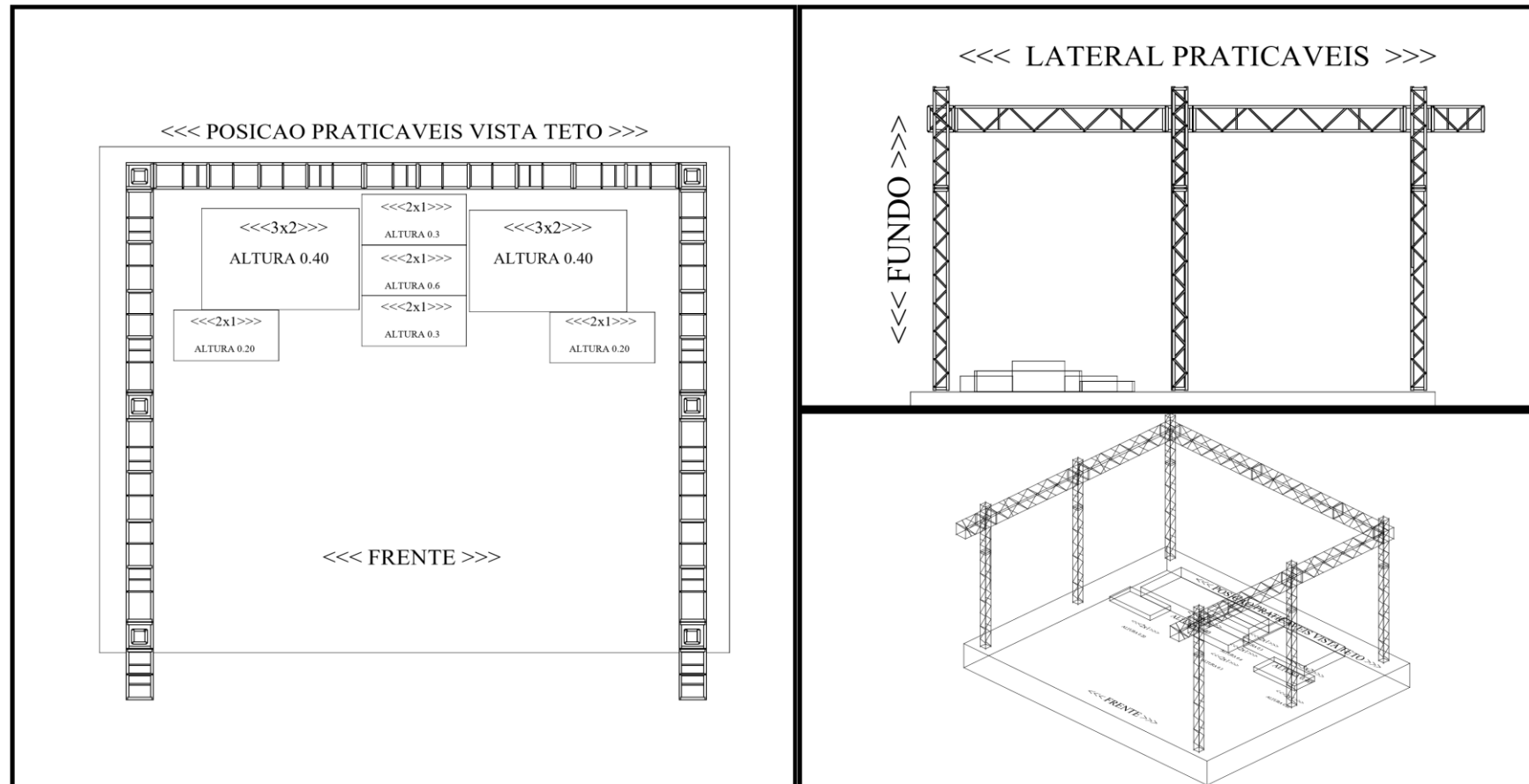


### VISTA LATERAL E ISOMETRIC ESCADAS

04= escadas nela tera 4 beam e 2 wash led

OBS TERA QUE TER ALGEMAS DUPLAS E CINTA E CANOS



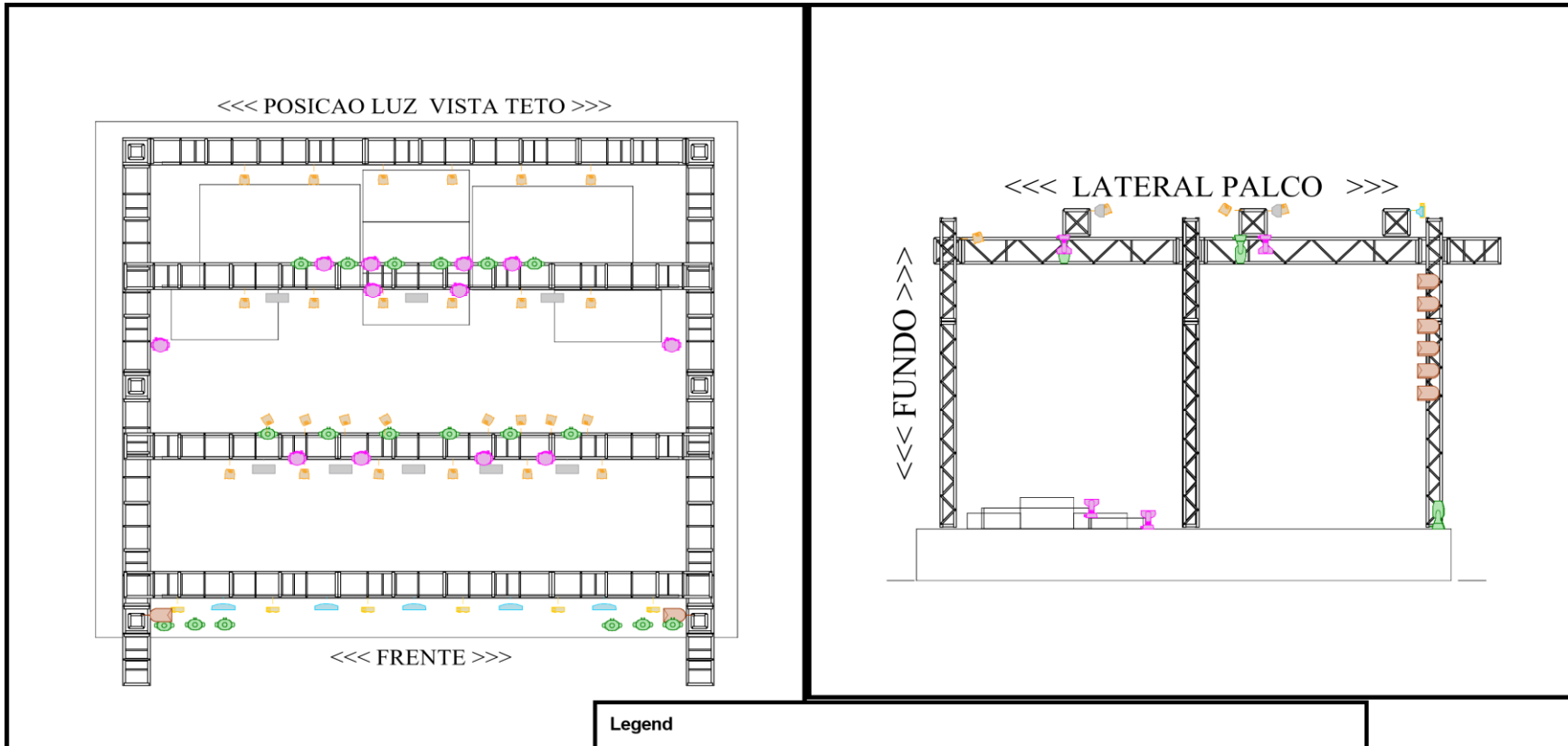


VISTA FRETE LATERAL E ISOMETRIC PAINEL DE LED

18= PRATICAVEIS COM CARPETE PRETO

OBS A ALTURA DOS PRATICAVEIS E DE (0.40) (0.30) (0.60) (0.20)



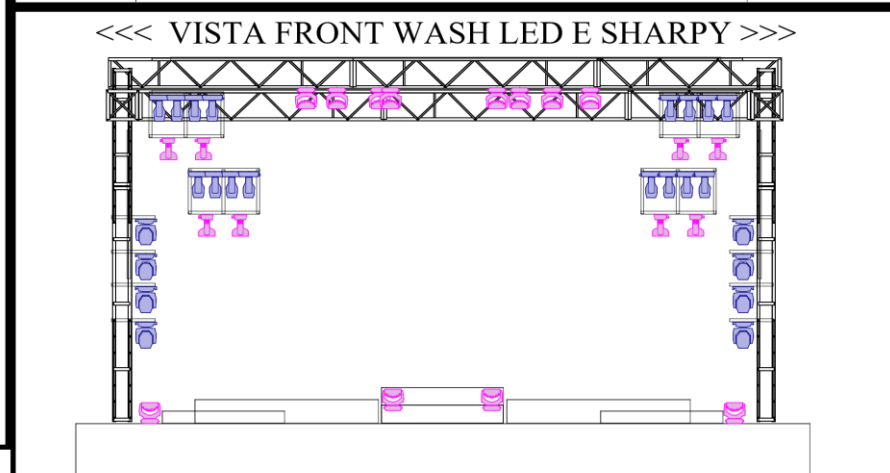
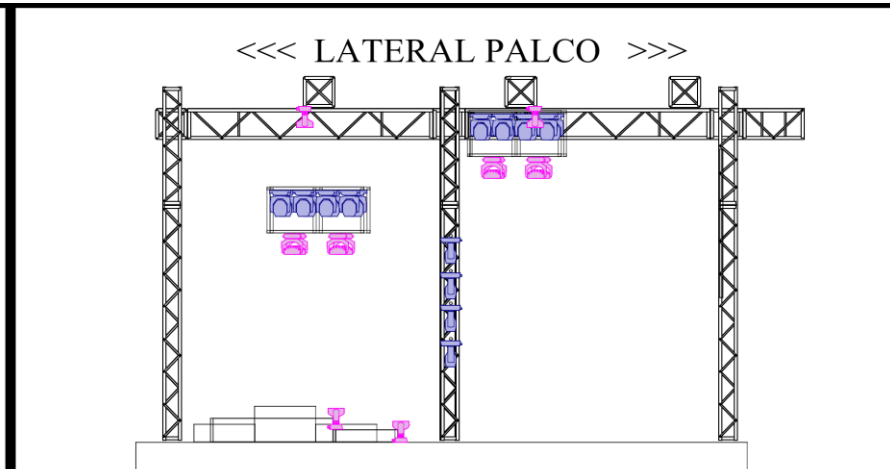
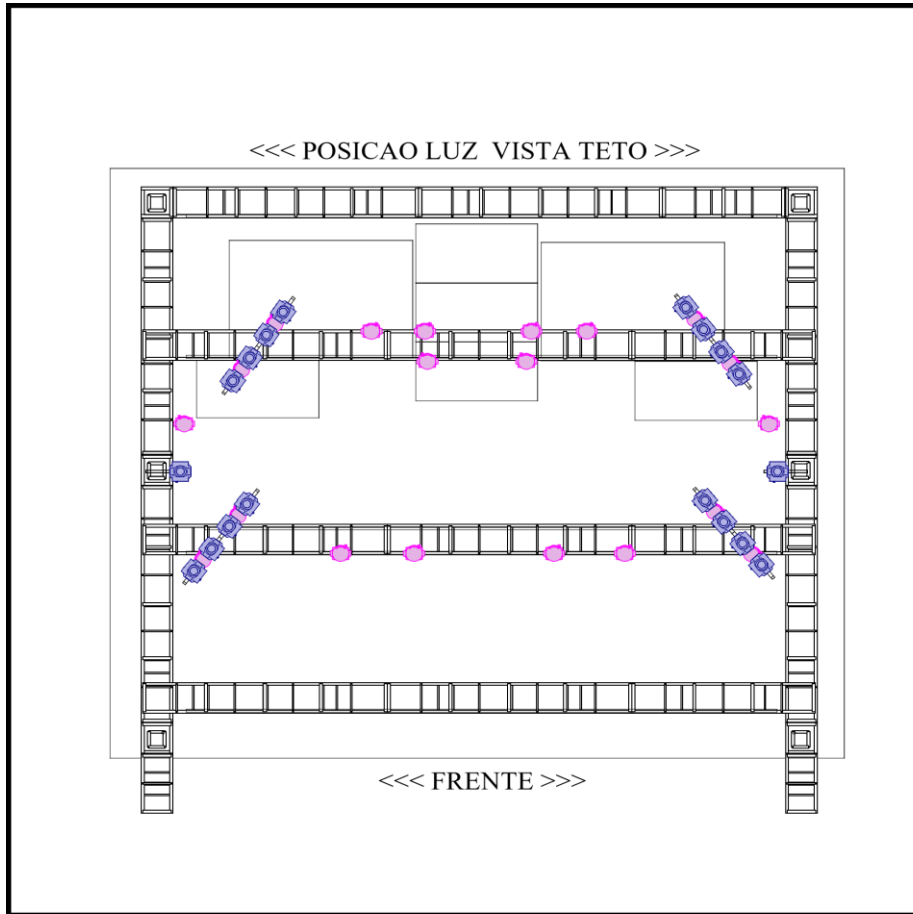


OBS= AS PAR LED E ATOMIC  
E P5 COLOCOR POR CIMA DO  
GRIDE

**Legend**

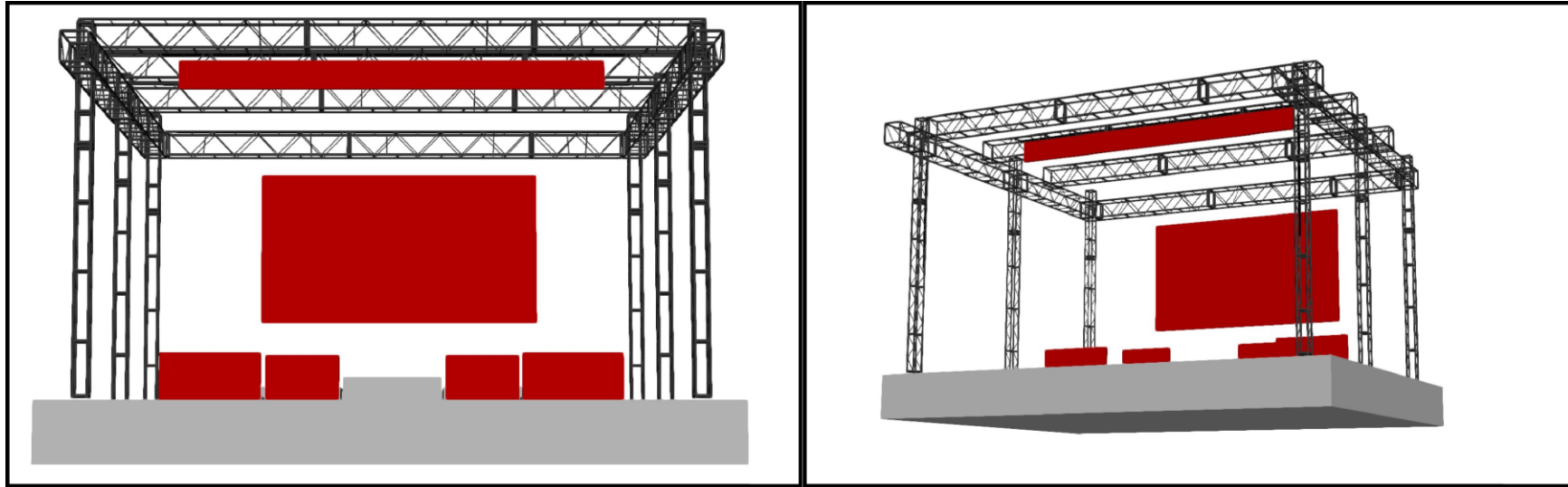
Symbol	Name	Count	Spares	Wattage	Lamp
	Rush PAR 1 RGBW	26		78	LED
	PAR 64	12		1000	CP/95 240V - WFL
	Jack	18		230	MSD Platinum 5R 189W
	Atomic 3000	8		3600	XOP 7-OF
	Robin LEDWash 600	12		330	LED
	Molefay Four Light	6		2600	DXK





Legend

Symbol	Name	Count	Spares	Wattage	Lamp	Lens	Mode
	Robin LEDWash 600	20		330	LED		3
	Sharpy	24		350	MSD Platinum 5R 189W		Vect



PAINEL DE LEDS

PAINEL TEXTEIRA PALCO >>>

<<< 8X1 >>>

PAINEL FUNDO >>>

<<< LED FUNDO >>>  
<< 6X3 >>

PAINEL CHAO >>>

<< 2X1 >> << 1.5 X 1 >> << 1.5 X 1 >> << 2X1 >>

